



FOLKSY HEADBANDS

KRISTIN NICHOLAS

STITCH GUIDE

Bobbled Edging: (multiple of 6 sts) *P2, ([k1, p1] 2 times) all into next st, turn, k4, turn, p4, sl 2nd, 3rd, and 4th sts over first st, p3; rep from * around.

Bobbled Bind-Off: *BO 2 sts pwise, ([k1, p1] 2 times) all into next st, turn, k4, turn, p4, sl the 2nd, 3rd, and 4th sts over the first st, BO first st pwise, BO 3 next sts; rep from * around.

KRISTIN NICHOLAS lives in northwest Massachusetts on a farm with her husband, daughter, and a miscellany of farm animals.

Finished Size Fair Isle headband: 22" head circumference. Garter and embroidered headbands: 23" head circumference.

Yarn Nashua Handknits Julia (50% wool, 25% alpaca, 25% mohair; 93 yd [85 m]/50 g):

#2163 golden honey (A)

#5185 spring green (B)

#2083 magenta (C)

#2250 French pumpkin (D)

#6416 midnight blue (E)

Garter Ridge headband: B, D, E, 1 skein each; Embroidered headband: B, C, D, E, 1 skein each; Fair Isle headband: A, B, C, D, E, 1 skein each. Yarn distributed by Westminster Fibers.

Needles Embroidered and Fair Isle headbands—Sizes 7 (4.5 mm) and 8 (5 mm): 16" circular (cir). Garter headband—size 7 (4.5 mm): 16" cir. Adjust needle size if necessary to obtain the correct gauge.

Notions Tapestry needle.

Gauge Garter headband: 4 sts and 10 rows = 1" in garter st on size 7 needle in the rnd. Embroidered headband: 4½ sts and 10 rows = 1" in garter st on size 8 needle in the rnd. Fair Isle headband: 3¾ sts and 6¼ rows = 1" in St st on size 8 needle in the rnd.

GARTER HEADBAND

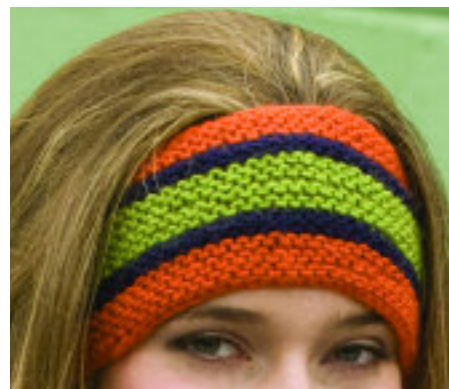
With D, CO 92 sts. Join for working in the rnd. Purl 1 rnd. Work 4 rnds in garter st, beg with a knit rnd. Change to E and knit 1 rnd, then purl 2 rnds. Change to B and work 8 rnds in garter st. Change to E and knit 1 rnd, then purl 2 rnds. Change to D and work 6 rnds in garter st. BO all sts kwise.

EMBROIDERED HEADBAND

With smaller needle and B, CO 92 sts. Join for working in the rnd. Purl 1 rnd. Work 4 rnds in garter st. Change to D and larger needle and work in St st for 1½". Change to B and work 6 rnds in garter st. BO all sts kwise. **Embroidery: Vine:** Working in chain st (see Glossary) with E, embroider an undulating vine as photographed. **Flowers:** Work 3 daisy flowers (see Glossary) at each low point of the vine using a single strand of yarn. With B doubled, work a single straight st (see Glossary) in the center of each daisy petal to fill in. Weave in loose ends.

FAIR ISLE AND BOBBLE HEADBAND

With C and smaller needle, CO 90 sts. Join for working in the rnd. Work bobbled



■ knit with E

⊕ knit with B

Fair Isle

⊕	⊕	⊕	⊕	⊕	⊕	⊕	⊕	⊕	⊕	11
⊕	⊕	⊕	⊕	⊕	⊕	⊕	⊕	⊕	⊕	9
⊕	⊕	⊕	⊕	⊕	⊕	⊕	⊕	⊕	⊕	7
⊕	⊕	⊕	⊕	⊕	⊕	⊕	⊕	⊕	⊕	5
⊕	⊕	⊕	⊕	⊕	⊕	⊕	⊕	⊕	⊕	3
⊕	⊕	⊕	⊕	⊕	⊕	⊕	⊕	⊕	⊕	1



edging rnd (see Stitch Guide). Purl 2 rnds. Change to B and knit 1 rnd, then purl 2 rnds. Change to D and work 2 rnds in garter st. Change to larger needle.

With B and E, work 11 rnds of Fair Isle chart. Change to smaller needle and A and work 2 rnds in garter st. Change to B and knit 1 rnd, purl 2 rnds. Change to E and knit 1 rnd, purl 2 rnds. With C, BO all sts with bobbled BO (see Stitch

Guide). **Embroidery:** Work a cross st (see Glossary) in the center opening of each Fair Isle diamond. Make 3 each alternating between colors A, C, and D. Weave in loose ends. ■

Chain Stitch Embroidery



Bring threaded needle out from back to front at center of a knitted stitch. Form a short loop and insert needle back where it came out. Keeping the loop under the needle, bring needle back out in center of next stitch to the right.

Straight Stitch Embroidery



Figure 1



Figure 2

Straight stitches can be worked side by side or radiating out from a center point. For best results, avoid stitches that are too long, too loose, or too close together. *Bring

threaded needle out from back to front at the base of the knitted stitch(es) you want to cover. Insert the needle at the top of the stitch(es) you want to cover. Repeat from * (Figure 1). Work straight stitches, alternating long stitches with short stitches (Figure 2).

Cross-Stitch



*Bring threaded needle out from back to front at lower left edge of the knitted stitch you want to cover. Working left to right, insert the needle at the upper right edge of the same stitch and bring it back out at the lower left edge of the adjacent stitch, directly below and in line with the insertion point. Repeat from * to form one half of the cross. Then work from right to left in the same manner to work the other half of the cross.

Daisy Stitch



Bring threaded needle out from back to front at center of a knitted stitch. *Form a short loop and insert needle back where it came out. Keeping loop under needle, bring needle back out in center of next stitch over. Beginning each stitch at the same point on the knitted background, repeat from * for desired number of petals (six shown).