


Winter Twilight Mitts


Design by Laura Rintala




Photos by Amanda Stevenson Lupke

 **FINISHED SIZE:**
6" hand circumference and 9" long.

 **YARN:**
Jade Sapphire Mongolian Cashmere 2-ply (100% cashmere: 400 yd [366 m]/55 g): #30 la nuit (black; MC) and #015 smokey mountain (purple multi; CC), 1 skein each.

 **NEEDLES:**
Size 1½ (2.5 mm): set of 5 double-pointed (dpn). Adjust needle size if necessary to obtain the correct gauge.

 **NOTIONS:**
Tapestry needle; stitch holder; markers (m).

 **GAUGE:**
36 sts and 47 rnds = 4" in stranded colorwork.

 **SKILL LEVEL:**
Intermediate 

WINTER TWILIGHT MITTS

LAURA RINTALA

NOTES

- ◆ These mitts are worked one at a time, working the chart as normal (reading right to left) across the first half of the stitches, then working the remaining stitches reading the chart left to right.

MITTEN

With MC, CO 64 sts. Divide evenly over 4 dpn, place marker (pm), and join in the rnd. Work in 2×2 rib for 1½". Change to St st and beg Twilight Trees chart, working right to left across chart on first 32 sts, then working left to right across the second 32 sts. Work through Rnd 35.

Thumb gusset: Work first 32 sts according to chart, pm, [M1] 2 times (see Glossary), pm, work rem 32 sts from chart. Cont in patt through Rnd 66 of chart—96 sts.

Sl 32 thumb sts to holder. Cont in patt on rem 64 sts through end of chart. **Ribbing:** With MC only, work in 2×2 rib for ½". BO in rib. **Thumb:** Sl 32 thumb sts onto dpn. With MC and beg at inside of thumb, pick up and knit 1 st in thumb gore, knit all thumb sts while dec 6 sts evenly spaced around, pick up and knit 1 st in thumb gore, pm and join in the rnd—28 sts. Work in 2×2 rib for ½". BO in rib. Weave in loose ends, block lightly. ■

Raised (M1) Increases

Left Slant (M1L) and Standard M1



Figure 1



Figure 2

With left needle tip, lift strand between needles from front to back (Figure 1). Knit lifted loop through the back (Figure 2).

Right Slant (M1R)



Figure 1



Figure 2

With left needle tip, lift strand between needles from back to front (Figure 1). Knit lifted loop through the front (Figure 2).

LAURA RINTALA is managing editor of *Interweave Knits*.

Finished Size 6" hand circumference and 9" long.

Yarn Jade Sapphire Mongolian Cashmere 2-ply (100% cashmere: 400 yd [366 m]/55 g): #30 la nuit (black; MC) and #015 smokey mountain (purple multi; CC), 1 skein each.

Needles Size 1½ (2.5 mm): set of 5 double-pointed (dpn). Adjust needle size if necessary to obtain the correct gauge.

Notions Tapestry needle; stitch holder; markers (m).

Gauge 36 sts and 47 rnds = 4" in stranded colorwork.

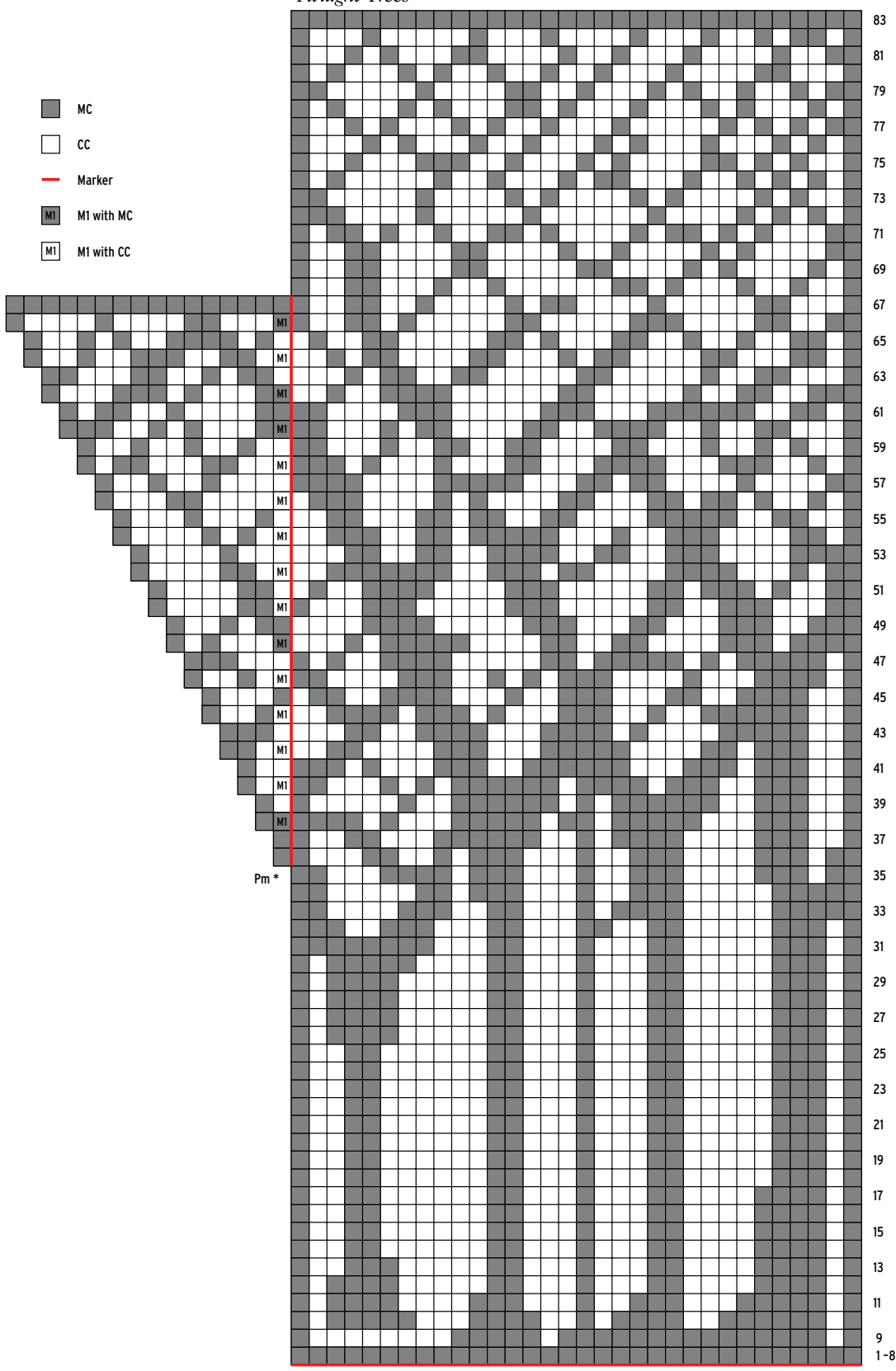




Winter Twilight

Twilight Trees

- MC
- CC
- Marker
- M1 M1 with MC
- M1 M1 with CC



3-st repeat
 Work across chart from right to left,
 then from left to right for each rnd.